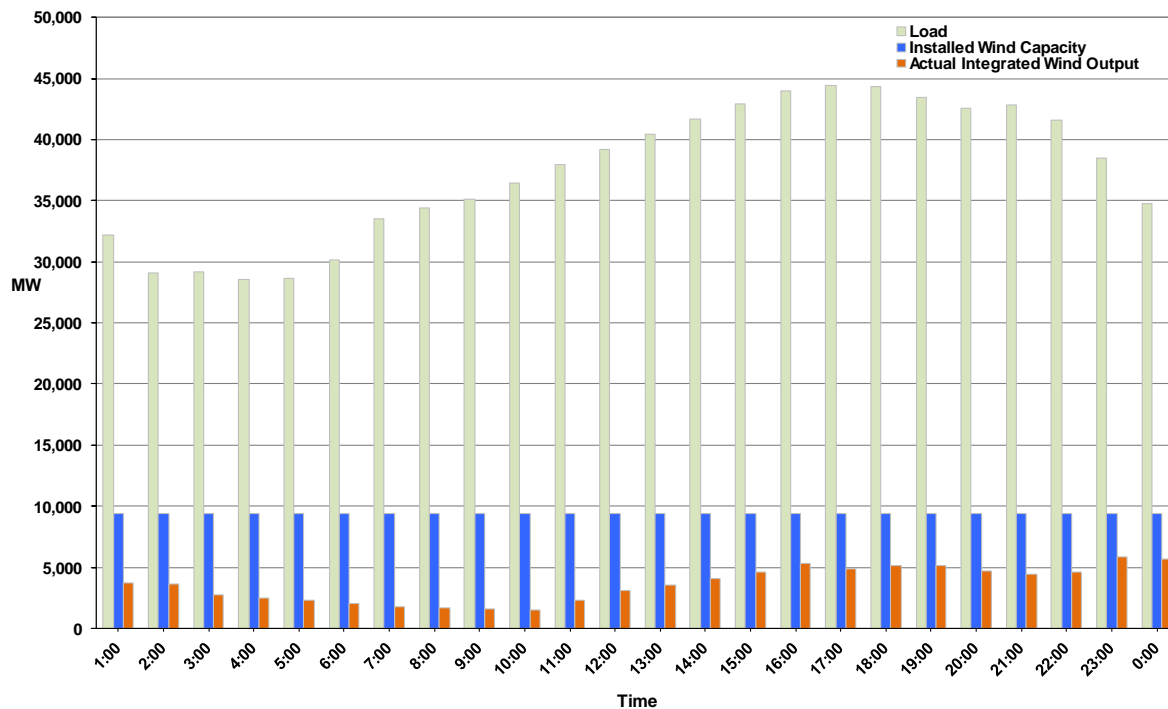




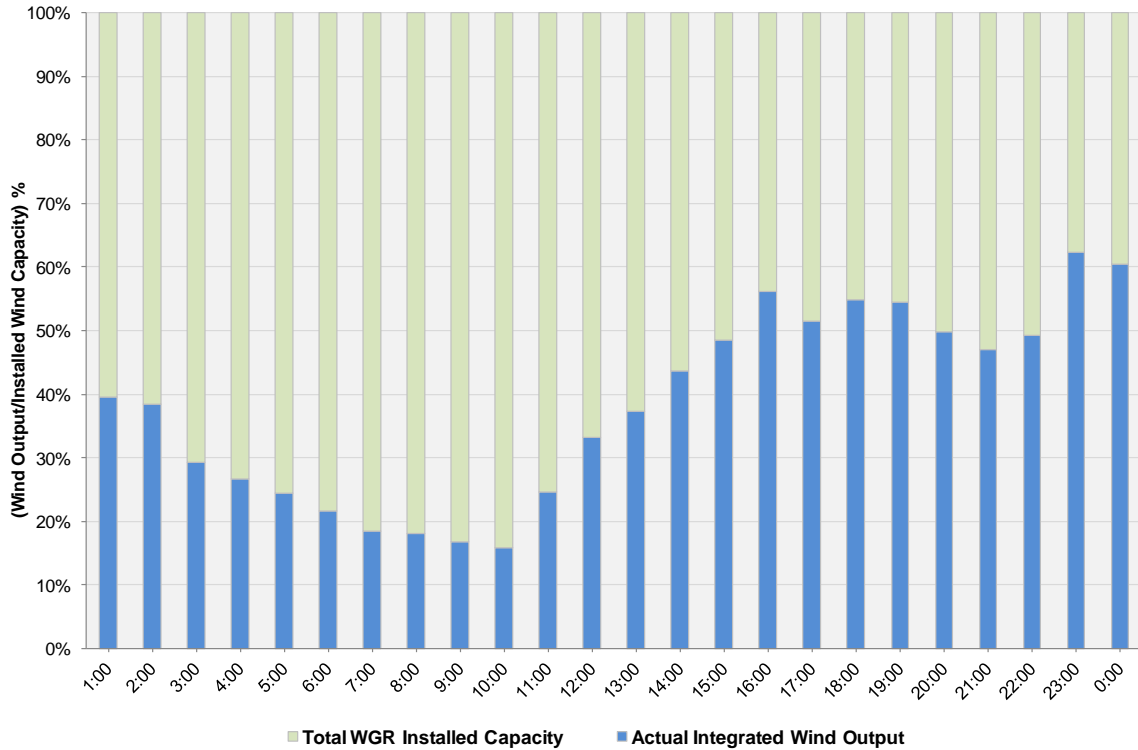
ERCOT Grid Operations Wind Integration Report: 04/26/11

| | |
|----------------------|-----------|
| Peak Load | 44,459 MW |
| Load Peak Hour | 17 |
| Wind Record 12/11/10 | 7,227 MW |
| Max Wind Value | 6,514 MW |
| Wind Peak Time | 22:27:32 |
| Wind Integration % | 16.81% |

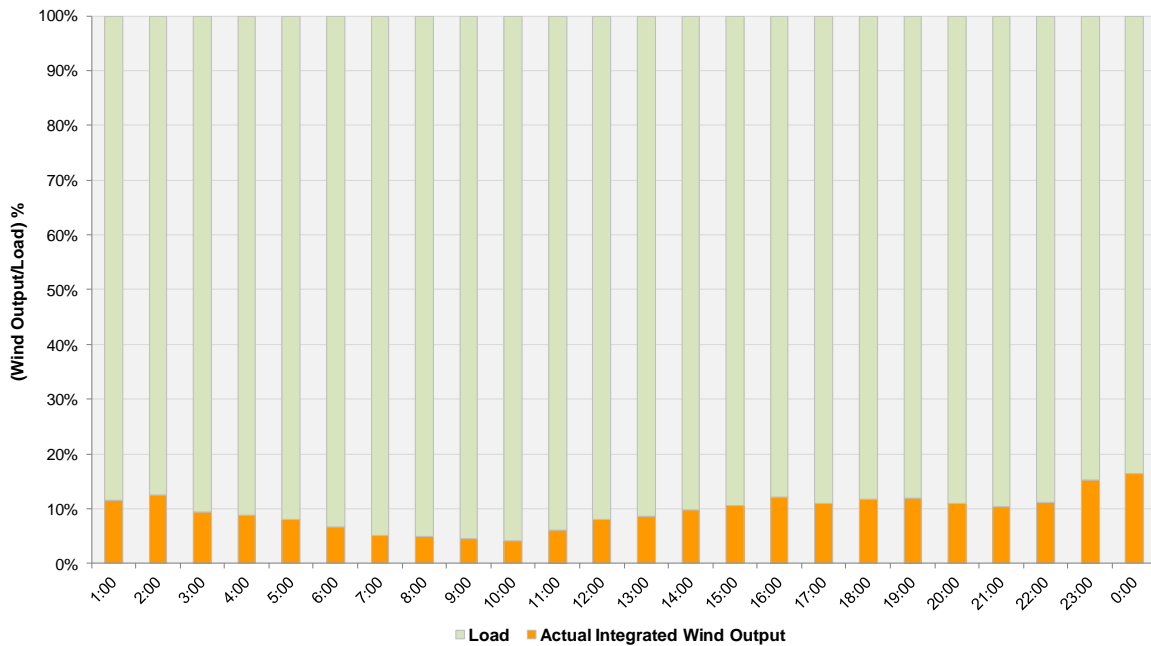
Hourly Average Actual Load vs. Actual Wind Output
04-26-2011



Actual Wind Output as a Percentage of the Total Installed Wind Capacity
04-26-2011



Actual Wind Output as a Percentage of the ERCOT Load
04-26-2011



ERCOT Load vs. Actual Wind Output 4/19/2011 - 4/26/2011

